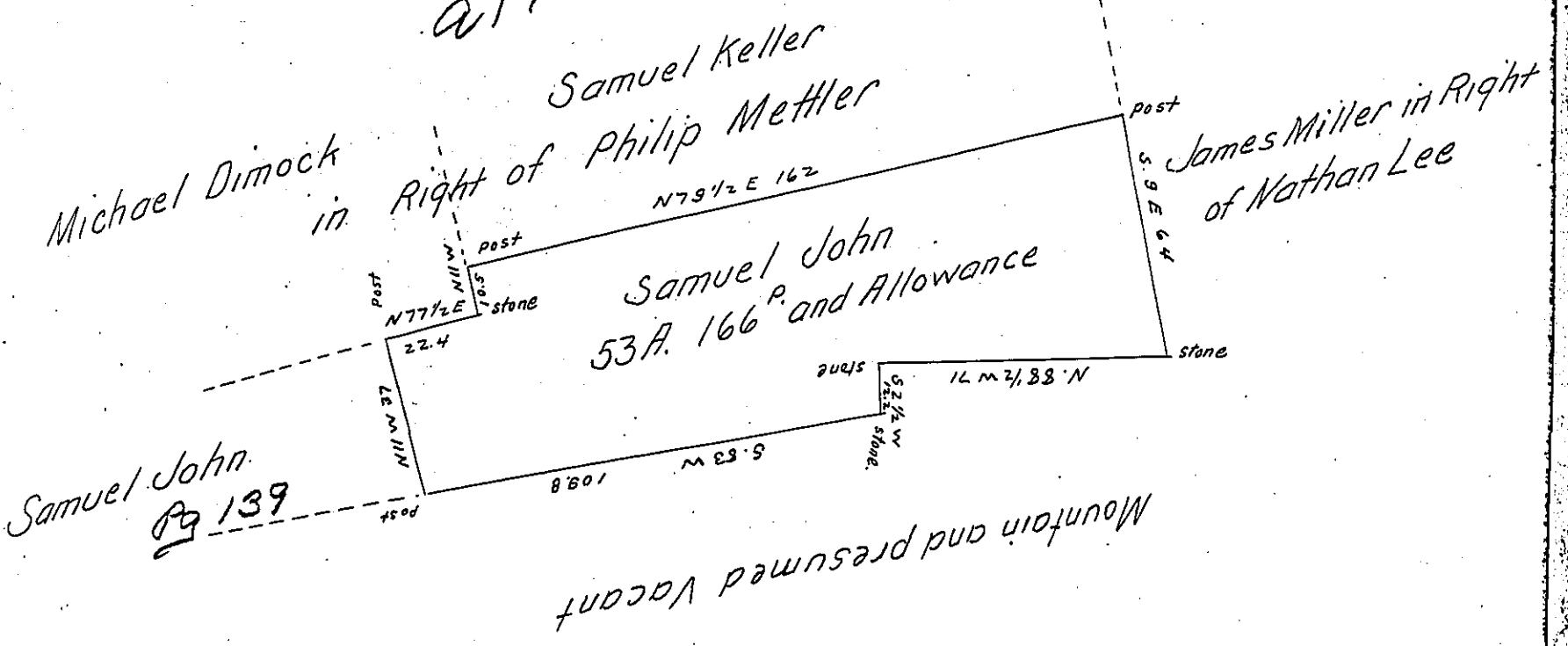


217-98



Draught of a tract of land Situate in Roaring Creek Township  
 Columbia (now Montour) County Containing Fifty three Acres & one  
 hundred and Sixty six perches and Allowance of Six per Cts for  
 Roads &c. Surveyed the first day of November A. D. 1850 for Sam-  
 uel John by Virtue of his Warrant dated the 8<sup>th</sup> day of October  
 1850. (unimproved)

To John Laporte Esq. } Solomon Neyhard D. S.  
 Surv. Gen. }

IN TESTIMONY that the above is a copy of the original remaining on file in  
 the Department of Internal Affairs of Pennsylvania, made  
 conformably to an Act of Assembly approved the 16th day of  
 February, 1833, I have hereunto set my Hand and caused  
 the Seal of said Department to be affixed at Harrisburg,  
 this thirty first day of May 1905.

*Joseph R. Perry*  
 Secretary of Internal Affairs.